



RoadWatchBC

RoadWatchBC Annual Report 2016-2017

A year in review...

Thank you RoadWatchBC volunteers! In our first year you reported 783 wildlife observations in the Elk Valley and South Country study area. You reported eleven different species, including deer (366), elk (317), bighorn sheep (71), moose (6), black bear (5), fox (5), coyote (3), turkey (2), beaver (2), skunk (2) and one lone wolf. The majority of observations reported were adjacent to the highway (61%) while 20% were reported crossing, 15% were reported as mortality and 5% were unknown. Thank-you so much for contributing to the program! We plan to collect data for several years so please continue reporting your observations, and encourage others to sign up as well.



RoadWatchBC is a citizen science program developed to enable the public to report on wildlife sightings in the Elk Valley and South Country regions of southeastern British Columbia. This information allows us to better understand where wildlife are safely crossing, involved in collisions, or moving adjacent to the highway. Ultimately, this data will lead to the development of informed strategies to reduce wildlife-vehicle collisions while ensuring the safe passage of wildlife across highways.

Join RoadWatchBC!

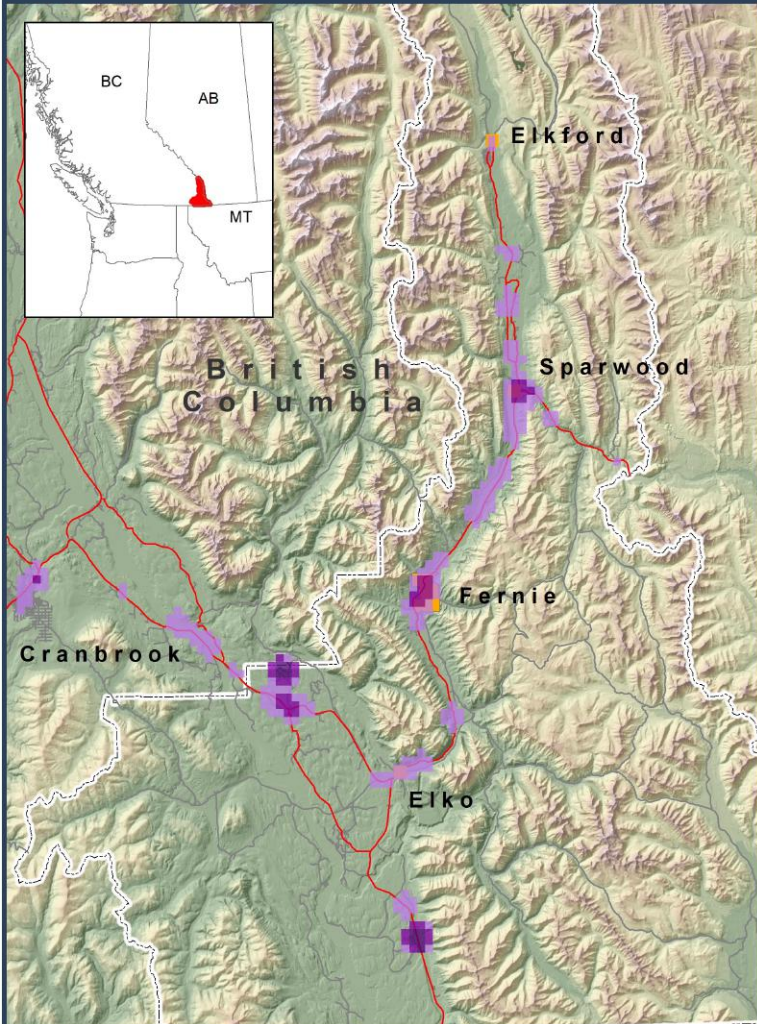
If you would like to help with this initiative to make our highways safer for humans and wildlife alike, there are three easy ways to participate:

1. Download the smartphone app RoadWatchBC and report wildlife whenever you see it (passengers only please!).
2. Use the app to report on your route, regardless of whether or not you see wildlife, and/or;
3. Upload your wildlife sightings retroactively using our interactive mapping tool (roadwatchbc.ca)

If you want to learn more or have technical questions, please check out the RoadWatchBC website or contact Beth, our local RoadWatchBC Coordinator, at info@roadwatchbc.ca

Total Annual RoadWatchBC Observations

ROADWATCHBC: CROSSING AND MORTALITY OBSERVATIONS ALONG HIGHWAYS

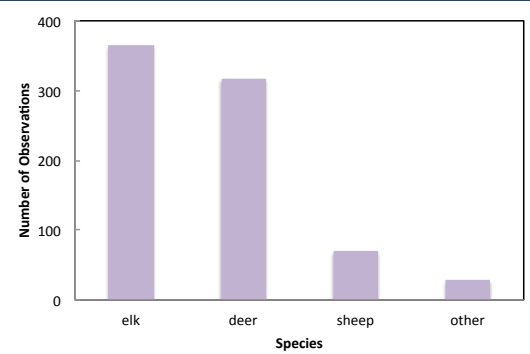


RoadWatchBC Observations (June 2016 to May 2017)

Increase density of RW observations reported as crossing or mortality
 ↓

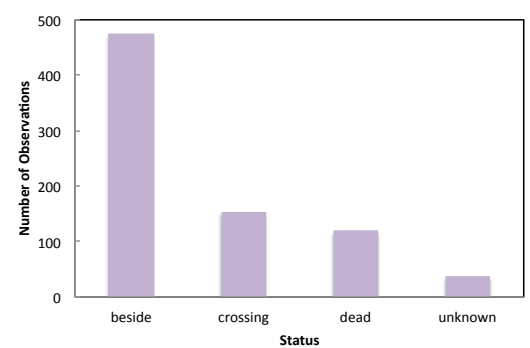
0 5 10 20
Kilometres

SPECIES OF OBSERVED THROUGH ROADWATCHBC DATA COLLECTION



The above graph illustrates the proportion of each type of species observed in the first year of data collection.

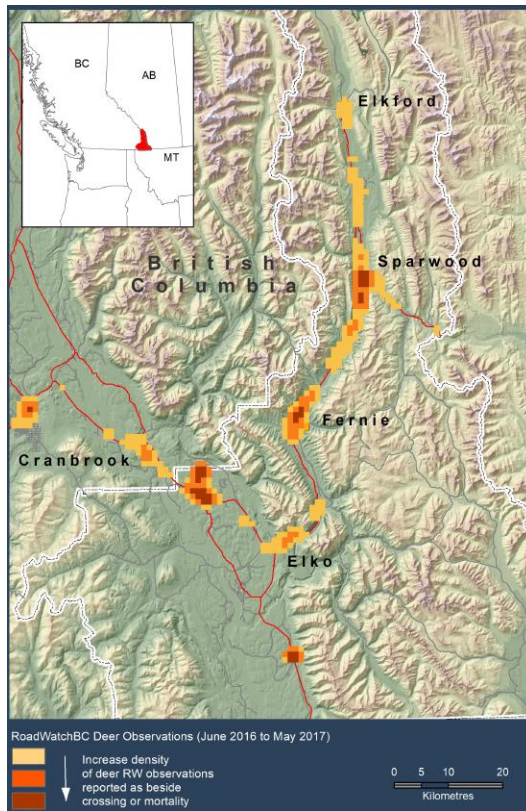
STATUS OF WILDLIFE OBSERVED THROUGH ROADWATCHBC DATA COLLECTION



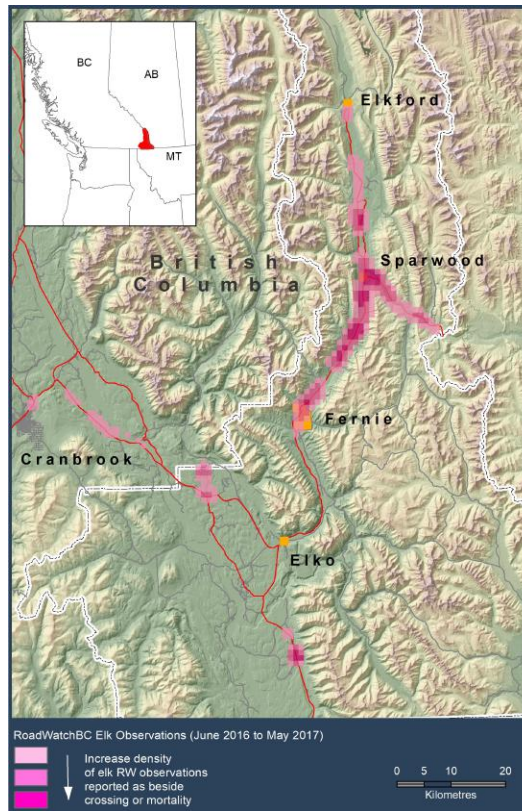
The above graph illustrates the status (beside, crossing, or dead beside highway) of each wildlife observation in the first year of data collection

The map represents increasing density (light to dark purple) of RoadWatchBC observations of successful and unsuccessful crossings reported in the first year of data collection. The graphs illustrate the most common species observed, and the status of the species observed (dead, beside or crossing the highway). The map and graphs are based on one year's worth of data collection (from June 2016 to end of May 2017) and are not intended to be used to infer patterns, since they are based on only one year of data and have not been compared with other datasets. This data also only shows chance observations reported and does not include information on route function (where we account for volunteer effort). The purpose is to show the utility of the data; it is a visual representation highlighting where the majority of wildlife observations were reported in the Elk Valley and South Country from RoadWatchBC participants. A full analysis will take place at the end of three years of data collection.

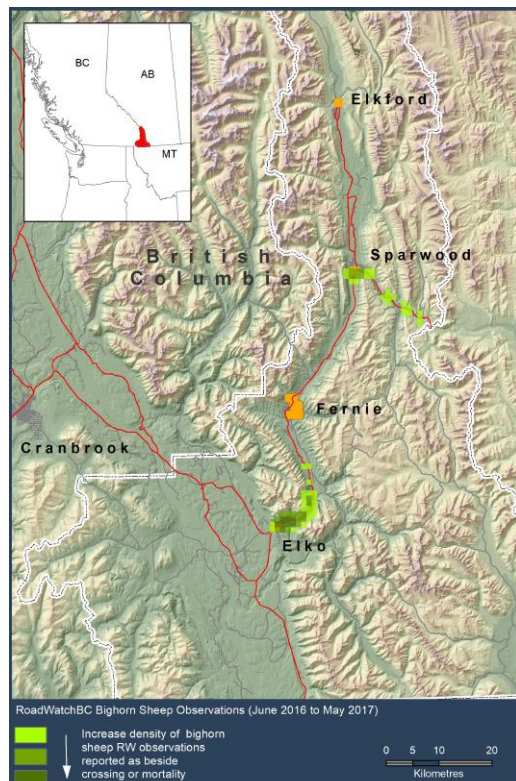
Deer Observations



Elk Observations



Bighorn Sheep



RoadWatchBC participants reported 317 deer whereby 51% were reported adjacent to the highway, 21% were dead, 26% crossed successfully and 2% the status was unknown.

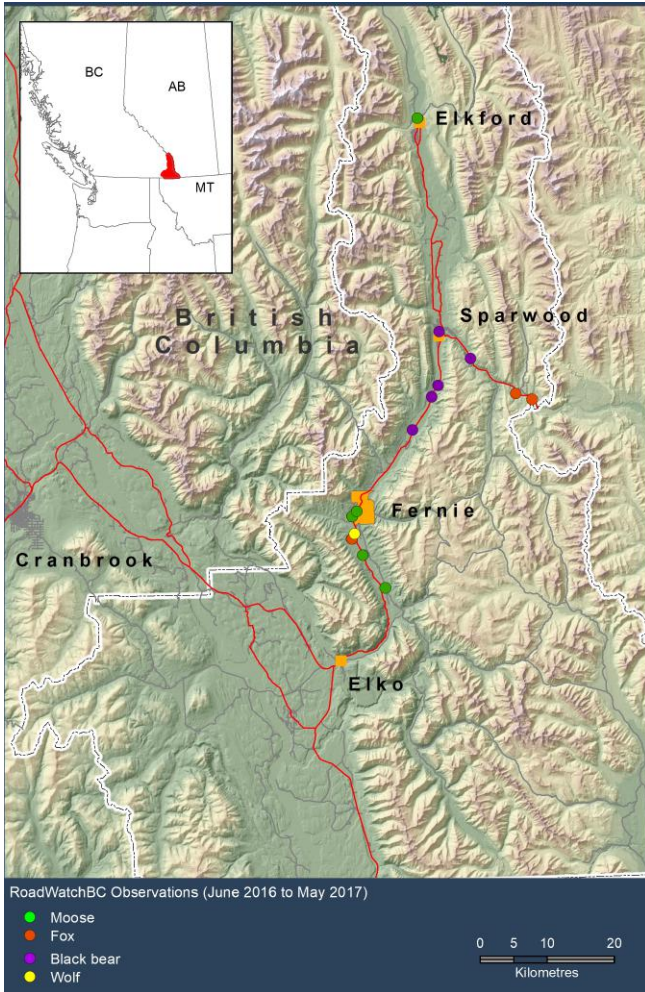
RoadWatchBC participants reported 366 elk whereby 66% were reported adjacent to the highway, 6% were dead, 21% crossed successfully and 7% the status was unknown.

RoadWatchBC participants reported 71 bighorn sheep whereby 83% were reported adjacent to the highway, 2% were dead, 11% crossed successfully and 4% the status was unknown.

Note: these density maps were created from one year's worth of data collection (from June 2016 to June 2017) and are not intended to be used to infer trends.



Other Wildlife Observations



Unusual Species and Number of Observations:

Moose:	6	Turkey:	2
Black bear:	5	Beaver:	2
Fox:	5	Skunk:	2
Coyote:	3	Wolf:	1
Unknown:	3		

Note: this map was created from one year's worth of data collection (from June 2016 to May 2017) and is not intended to be used to infer trends.

Inspiring Others!

RoadWatchBC has been adapted by Idaho Fish and Game as a pilot project to demonstrate the utility of a smartphone application in generating a dataset of wildlife observations. In addition the program has been adapted to help with pronghorn conservation in southwestern Alberta and southeastern Saskatchewan, where a new program, PronghornXing, will be launched in September 2017.

